

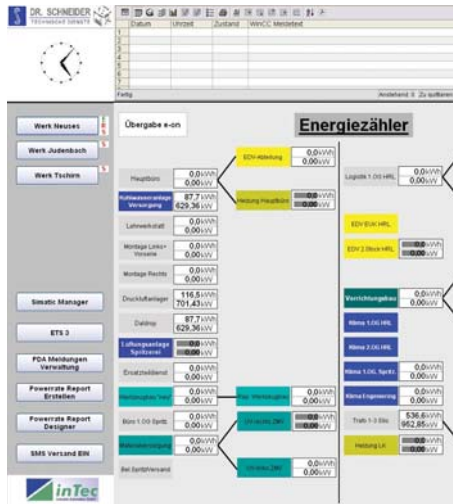
SIMATIC WinCC & Specialist

Customer benefits

- Energy consumption transparency
- Increased planning reliability
- Future-proof solution concepts

SIMATIC WinCC and inTec Energy Flow Control

In the parent plant of Dr. Schneider Kunststoffwerke GmbH located in Kronach-Neuses, the SIMATIC WinCC Specialist inTec Industrie Automation GmbH realized an elaborate and future-proof solution for system-wide energy flow visualization and energy management on the basis of the SCADA system by Siemens in combination with the SIMATIC powerrate option package.



Certificates – inTec Industrie Automation GmbH

We have proven our competence as Siemens Solution Partner Automation in the following areas:

- Human Machine Interface SIMATIC HMI Specialist
- Human Machine Interface SIMATIC HMI RFID-System SIMATIC Ident

SIMATIC WinCC and inTec: Energy Flow Control

The Dr. Schneider group of companies is specialized in high-quality plastic products and in the production of extremely complex injection molding parts for the automotive industry, e.g. window frames and trimming elements for seats and columns, nozzles and air outlets. The production equipment employed in the parent plant Kronach-Neuses amongst others comprises 111 injection molding machines with a clamping force of up to 1.700 t, large-surface and lathe spindle paint shops as well as diverse partially automated assembly lines. The plastic production plants of Dr. Schneider attach great importance to innovation: As a full-service supplier for a highly dynamical industrial sector, the company consistently ensures that all employed systems correspond to state-of-the-art technology.

Energy efficiency as key factor

Therefore, the subject of energy consumption was tackled very early on – as one of the major challenges in the automotive industry besides the aspect of CO₂ emissions. As the sector is required to keep energy consumption and emissions at a minimum throughout the entire production chain, suppliers who provide respective proof are increasingly preferred. Measures for the assurance of energy consumption transparency also represent a basic prerequisite for the tax incentives announced for 2013 by the German Federal Govern-

ment. Against this background, the company approached inTec Industrie Automation GmbH with its request for an equidistant solution for energy data acquisition and systematization as well as efficient energy management. The certified Siemens Solution Partner and SIMATIC WinCC Specialist, which has been realizing innovative automation solutions for industrial and production technology applications for more than 15 years, proved the ideal partner for this future-oriented project.

Visualization, analysis, optimization

The automation experts rapidly recognized that SIMATIC WinCC in combination with the SIMATIC powerrate option package ideally met the given requirements: The SCADA system by Siemens had already been employed for the visualization of diverse plant sections in Neuses. The visualization was expanded throughout the entire plant. The current measuring devices already implemented at some load outputs were connected to a SIMATIC S7-300 control for measured value processing. For calculation of the parameters to be displayed, inTec integrated the powerrate function blocks and expanded the S7 software accordingly, e.g. with regard to the 15-minute average value used for settlement. This intelligence is already integrated in the current SENTRON PAC power monitoring devices by Siemens, thanks

to which they can be directly used for the relevant values' visualization. The SIMATIC powerrate energy management software, a SIMATIC WinCC option, displays the measured values, documents their development, supports the indication of trends and thus also facilitates forecasts. As a result, the legal requirements as well as the DIN EN 16001 standard for energy management systems are already complied with.

Advantage through transparency

The solution implemented by inTec offers ample optimization and saving potentials in terms of process control and maintenance. Also a further differentiation of load feeders by the integration of additional measuring points or incorporation of further media such as gas, water or compressed air is supported. In the future, also an energy controlling function can be installed on the basis of the current system configuration via B.Data, a further SIMATIC WinCC software option. This facilitates considerably improved planning reliability for new orders.

With the possibility of documenting energy awareness and responsible resource handling on the basis of verifiable data, the Dr. Schneider plastic production plants also meet an important requirement placed upon preference suppliers in the automotive industry – possibly the decisive step towards competitive edge.

Information about the Siemens Solution Partner Programm

Under the Siemens Solution Partner Automation and Power Distribution Program, we join forces with our Solution Partner. By merging our product and system expertise with the application and industry knowledge of our partners, we have created a common basis for the fast, smooth and highly efficient implementation of your requirements – customized solutions for your competitive advantage.

www.siemens.com/automation/solutionpartner

Solution Partner address

inTec Industrie Automation GmbH
 Am Weichselgarten 36
 D-91058 Erlangen
 Phone: +49 (0) 9131-69 57 9-0
 Fax: +49 (0) 9131-69 57 9-35
 Schicks@intec-in-automation.de
www.intec-in-automation.de